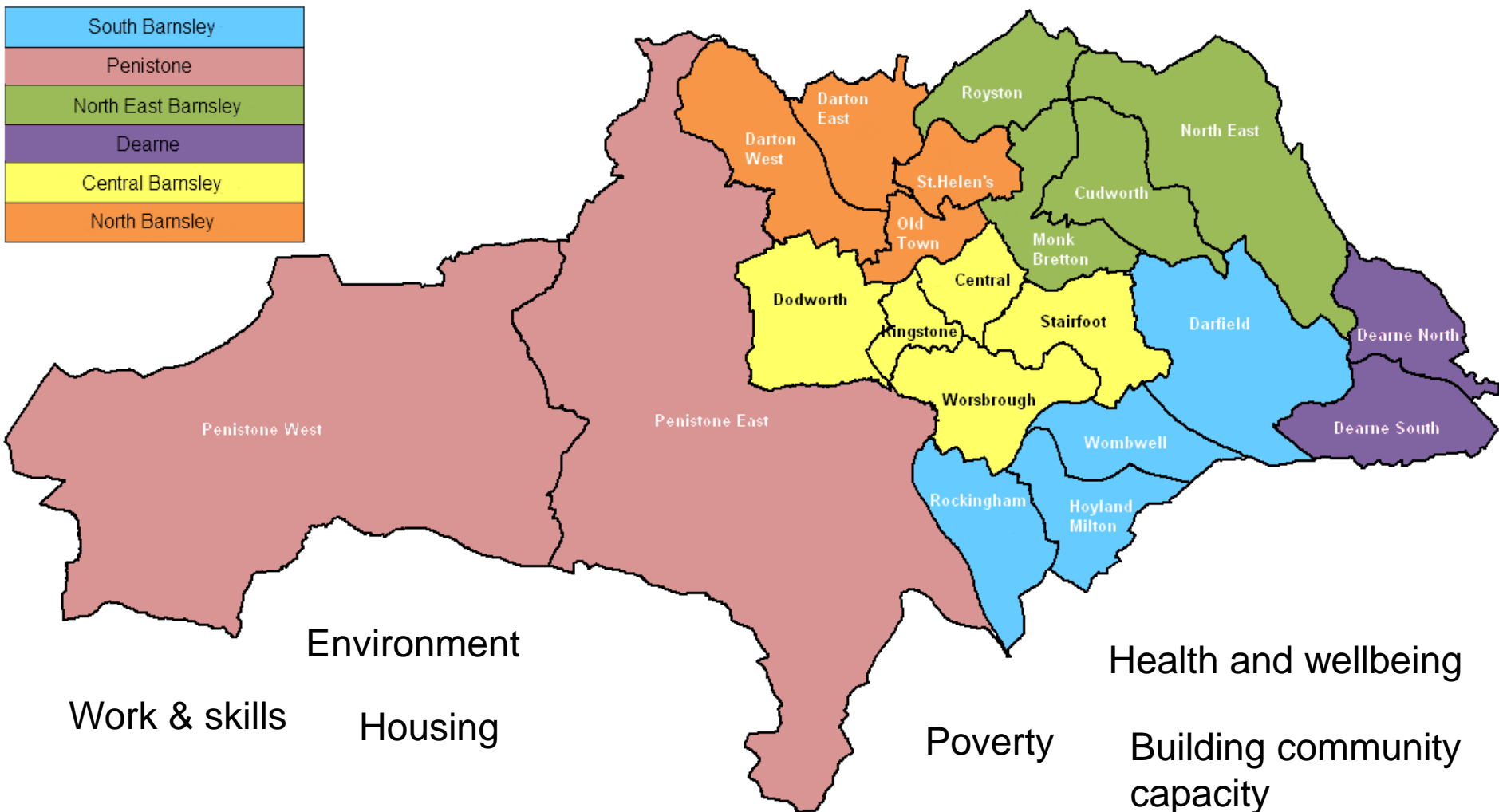


Building on some firm foundations since 2013....



Scale of the Impact

In 2017/18 alone, the approach produced:

- 8008 volunteers who gave 32,104 hours to their communities (economic value £395,000)
- There were 1457 new volunteers & 53 new groups
- SROI was £11.80 for every £1 invested
- Since 2013, 1,959 Ward Alliance Projects (average spend of £1,300) have been supported
- Jobs created, apprenticeships created & work placements



A Social Movement

“It’s wonderful to see our community coming together. I love watching things come from seeds to your plate. It’s amazing – such a peaceful friendly environment to go to. Hope to see you soon xx”



<https://www.youtube.com/watch?v=ROUwiNYiuGo&feature=youtu.be>



BARNLSLEY
Metropolitan Borough Council

So what have we learnt ...

- People value what they create
- Focus on what's strong not what's wrong brings about hopefulness, pride and courage
- A lot about outcomes and what matters most (people value what's measured so lets start measuring the right things)
- How services are designed and delivered should vary relative to people and place
- The more we can understand about peoples lives and experiences the greater chance we have of ensuring services and supports are timely
- we are all co-dependant in our lives



Starting on the path to integration ..

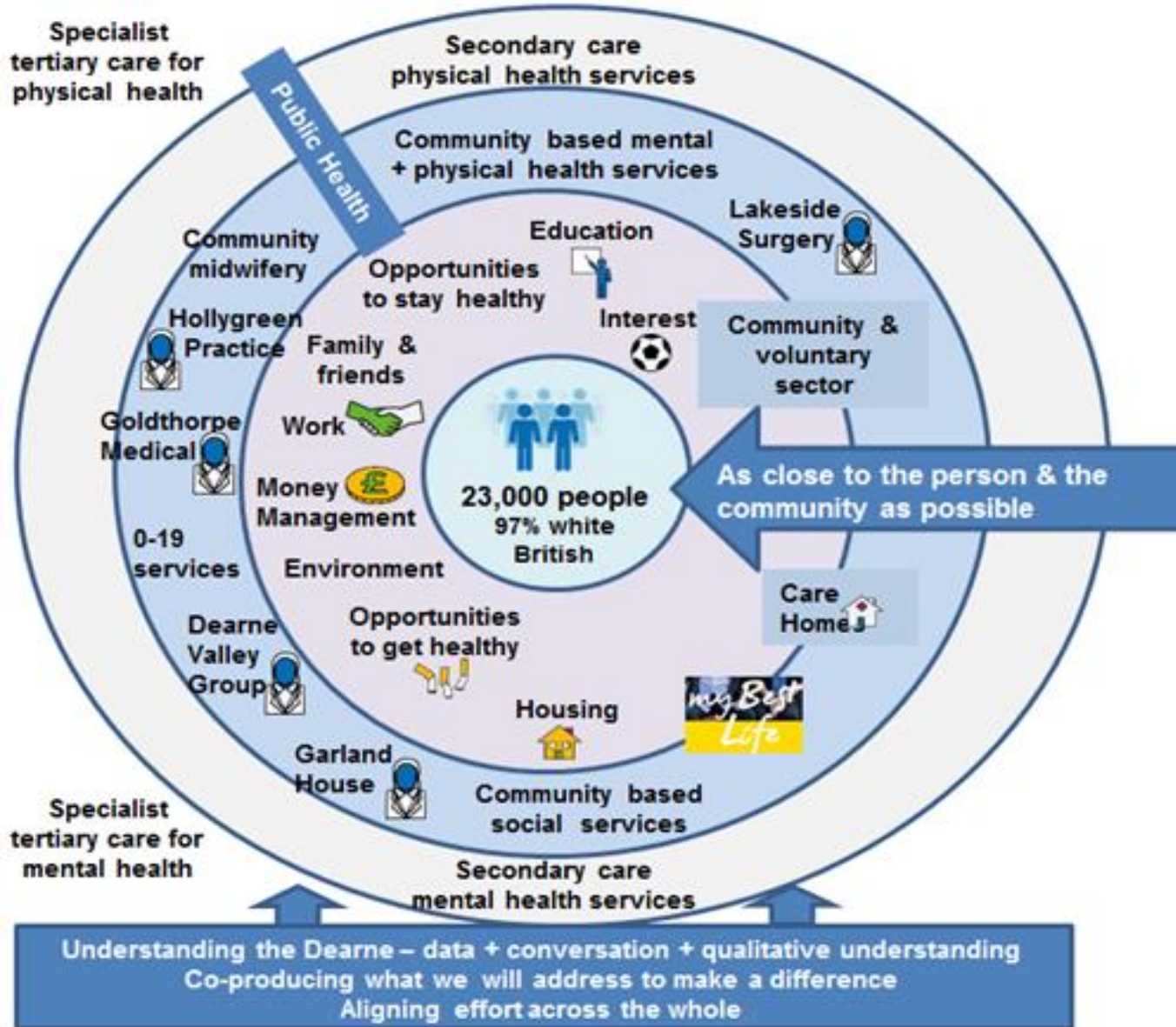
- Proposition to start to think about how we might build integrated approaches to health and wellbeing building on the area based approach
- June 18 event – started the discussion focus on the Dearne
- November 30th – sharing the story of the Dearne. Data, experiences, knowledge.
- Today



The Dearne Neighbourhood plan v1

OUR APPROACH

OUR PLAN



Bring people together



Align plans and effort

- CVD
- Frailty
- others



Work with those who get a lot of support from the system



Understand the data & experiences



Co-produce a single plan



BARNLSLEY
Metropolitan Borough Council

Developing Team Dearne

- All partners coming together and solution focussed - Dearne Task and Finish Group
- Getting to know who is part of 'Team Dearne'
- Recognising the services and assets in the community
- Embedding products such as Live Well Barnsley, dementia friends, connecting events like Sloppy Slippers etc
- Developing a carer's support group for Dearne
- Started a social isolation project (Nesta funded)
- Supporting My Best Life – targeted case discussions
- Active Dearne starting

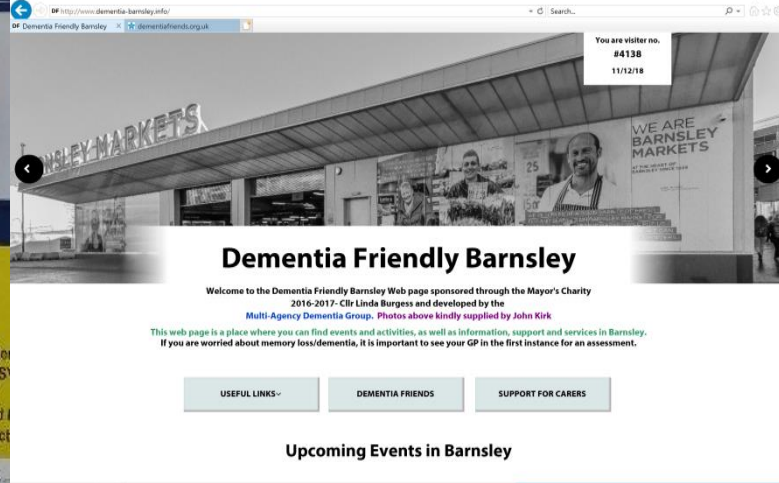


Considering Right Place ...

Relocating community services into Dearne :

- Diabetes
- Respiratory
- Urology
- Gynaecology
- IAPT





There's a lot happening – lets connect

Plans for 'age friendly' town in Barnsley



Our belief

- We want to move towards a system which arranges services around the individual and provides the support they need to stay or get well – whether physical, emotional or social.
- That if health and social care providers, voluntary sector and local people work together we can improve care for local people. (self-care, wider informal family and carer support, and broader issues affecting people's health and wellbeing, such as housing and employment)



So...

- Lets get to know our communities together
- Lets understand who the most vulnerable are
- Lets start to connect, appreciate the assets we have and use them well
- Lets invite others in to help us, business community, vol & community & public ++
- Lets build together

