

MEDI DERMA-PRO

Instructions for Use Guide



South West
Yorkshire Partnership
NHS Foundation Trust

Use this guide to help you get the best results when using **MEDI DERMA-PRO** Foam & Spray Incontinence Cleanser and **MEDI DERMA-PRO** Skin Protectant Ointment from the **TOTAL BARRIER PROTECTION** range.

MEDI DERMA-PRO

Foam & Spray Incontinence Cleanser - Non-Sting



For Cleansing - Following Each Episode of Incontinence



Trigger Modes:

Turn the nozzle to the position (1).

• Foam Mode:

Ensure the nozzle flap is closed and pull the lever in firmly. Use foam mode on difficult-to-reach areas.

• Spray Mode:

Open the nozzle flap (2) and pull the lever in firmly.



Application:

- Apply directly to the skin or onto a wash cloth.



Cleansing:

- Gently clean the affected area, minimising application of pressure and/or friction. No rinse required.



Drying:

- Pat dry or leave to air dry where possible.



PRECAUTIONS

For Cleanser and Ointment:

For **EXTERNAL** use only. Do **NOT** use if there are signs of skin reaction following product application and consult your clinician accordingly. Only use as directed. Do **NOT** use with adhesive dressings or appliances. Do **NOT** use past expiry date or if product is damaged. For single patient use only. Once open, products can be used through to expiry date. Keep out of reach of children.

MEDI DERMA-PRO

Skin Protectant Ointment - Non-Sting



For Skin Protection and Restoration - Following Cleansing



Skin Preparation:

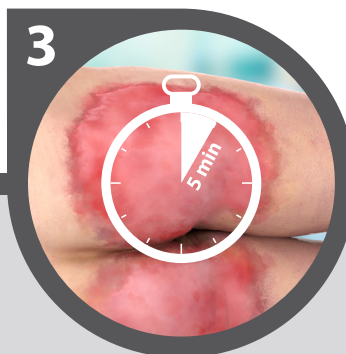
- Ensure skin is clean and dry. Do **NOT** use **MEDI DERMA-PRO** Skin Protectant Ointment if an adhesive dressing or device is being applied to the treatment area.



Application:

- Apply by gently smoothing a thin uniform coating over the whole area to be treated. Avoid rubbing the skin. A more liberal application may be required for severely moist or damaged skin.

Do **NOT** apply to an area with greater than superficial partial thickness skin damage.



PRECAUTION

- If using in conjunction with other topical treatments (eg. fungal cream), allow at least 5 minutes for absorption of the first product before applying **MEDI DERMA-PRO** Skin Protectant Ointment.



Cleansing and Reapplication:

- Reapplication is recommended after each episode of incontinence, following cleansing. The ointment should also be reapplied when there is no visible sheen on the skin.

For best results use with **MEDI DERMA-PRO** Foam & Spray Incontinence Cleanser.

Medicareplus International Limited

Chemilines House | Alperton Lane | London | HA0 1DX | United Kingdom
Telephone: +44 (0)20 8810 8811 | Email: info@medicareplus.co.uk
www.medicareplus.co.uk and www.tbpskincare.info



Medicareplus
INTERNATIONAL
Est. 2008