

MEDI DERMA-S

Instructions for Use Guide

Use this guide to help you get the best results when using **MEDI DERMA-S** Total Barrier Cream and **MEDI DERMA-S** Total Barrier Film from the **TOTAL BARRIER PROTECTION** range.



South West
Yorkshire Partnership
NHS Foundation Trust

MEDI DERMA-S Total Barrier Cream - Non-Sting

For Skin Protection + Moisturisation (After every third wash/ Twice daily)



Skin Preparation:

- Ensure that the skin around the treatment area is clean, free from any grease and dry.



Application:

- **"Pea to Palm"**. Use a pea sized amount of cream to cover an area approximately the size of your palm.
- Using a gloved finger tip, apply evenly to the treatment area using a circular motion.



Quantity to Use:

- **Do NOT over-apply**. The skin should be clearly visible through the cream layer.
- If the skin appears oily, too much cream has been applied. Remove excess with a soft paper tissue/towel.



Apply Dressing/Device:

- Once you are happy that the correct amount of cream has been applied and is fully dry, apply the dressing, pouch or adhesive device as normal (if applicable).
Reapply barrier cream as instructed.

MEDI DERMA-S Total Barrier Film - Non-Sting

For Skin Protection (Lasts up to 72 hours)



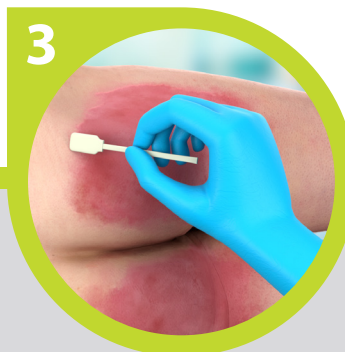
Skin Preparation:

- Ensure that the skin around the treatment area is clean, free from any grease and dry.



Application:

- When using the aerosol or pump spray format, ensure that the can is **held away** from the skin surface:
Aerosol **10-15cms**.
Pump Spray **5cms**.
- Use a **slight sweeping movement** as you spray to ensure an even coating.



- When using the applicator format, apply a uniform coating over the whole area to be protected. If using for management of periwound or peri-stomal maceration/excoriation, apply to surrounding skin only.
- Use a **slight movement** as you apply to ensure an even coating.



Apply Dressing/Device:

- Once dry*, apply the dressing, pouch or adhesive device as normal (if applicable).
Reapply barrier film as instructed.

* Drying Time:

- When using the aerosol or pump spray, allow up to **30 seconds** to fully dry.
- When using the applicator or wipe, allow **5-10 seconds**.
Hold open any skin folds to ensure complete drying.



PRECAUTIONS

For Total Barrier Cream & Total Barrier Film:

Do **NOT** use **MEDI DERMA-S** Total Barrier Cream/Film on infected areas of skin. Do **NOT** use **MEDI DERMA-S** if there are signs of skin reaction following product application and consult your clinician accordingly. Only use as directed.

Medicareplus International Limited

Chemilines House | Alperton Lane | London | HA0 1DX | United Kingdom
Telephone: +44 (0)20 8810 8811 | Email: info@medicareplus.co.uk
www.medicareplus.co.uk and www.tbpskinicare.info

