

Heart Failure Academy

Dr. Lyndsey Hornby, PhD

Project Manager, Heart Failure Academy

Health Innovation Network Yorkshire & Humber

18 June 2025

Working with...  **Pumping Marvellous**
The heart failure charity



Health Innovation
Yorkshire & Humber



Humber and North Yorkshire
Health and Care Partnership



West Yorkshire
Health and Care Partnership



NHS
The Leeds
Teaching Hospitals
NHS Trust

NHS
England

What is the Heart Failure Academy?

The Heart Failure Academy is a locally developed online resource that aims:

To upskill all clinicians and non-clinical staff to recognise their role in supporting the recognition of heart failure signs and symptoms, enabling a timely diagnosis, to get the right treatment at the right time.



Health Innovation
Yorkshire & Humber



Humber and North Yorkshire
Health and Care Partnership



South Yorkshire and Bassetlaw
Integrated Care System

West Yorkshire
Health and Care Partnership

Working with...



Pumping Marvellous

The heart failure charity

NHS
The Leeds
Teaching Hospitals
NHS Trust

NHS
England

Why is the Heart Failure Academy needed?

Heart failure hides in plain sight¹



80%

Heart failure diagnosis recorded in hospital



40%

had a primary care consultation with 1 of 3 HF symptoms recorded

The location of heart failure diagnosis makes a difference on patient outcomes²

Five-year mortality

56%



Newly diagnosed in primary care



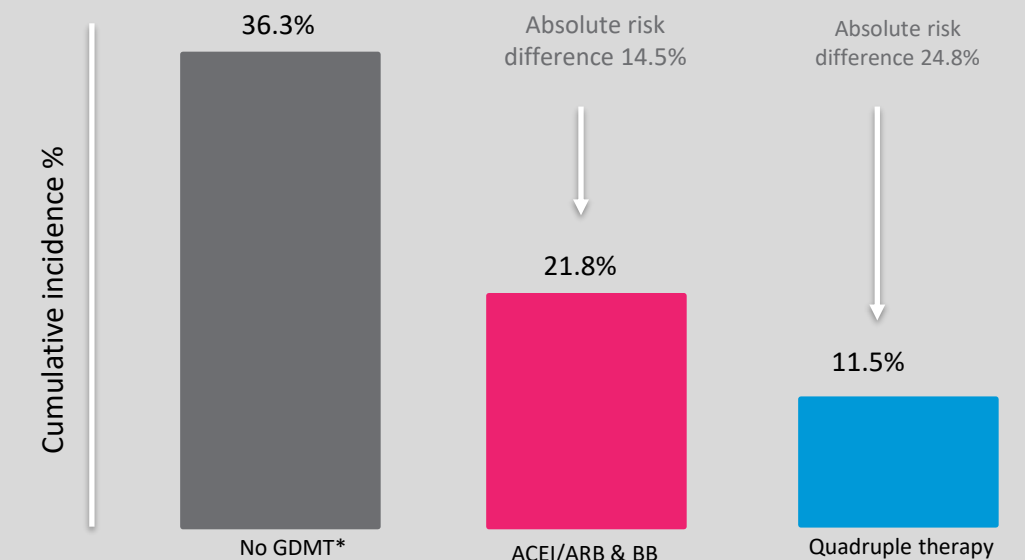
Five-year mortality

78%



Newly diagnosed in hospital

Estimated effects of GDMT on 12 month all cause mortality³



*GDMT – Guideline directed medical therapy

References

1. Bottle A, Kim D, Aylin P, et al. Routes to diagnosis of heart failure: observational study using linked data in England Heart 2018;104:600-605 <https://heart.bmj.com/content/104/7/600>
2. Koudstaal S, Pujades-Rodriguez M, Denaxas S, Gho JM, Shah AD et al. Prognostic burden of heart failure recorded in primary care, acute hospital admissions, or both: a population-based linked electronic health record cohort study in 2.1 million people. *Eur J Heart Fail* 2017; 19: 1119–1127
3. Greene, S, Ayodele, I, Pierce, J. et al. Eligibility and Projected Benefits of Rapid Initiation of Quadruple Therapy for Newly Diagnosed Heart Failure. *J Am Coll Cardiol HF*. 2024 Aug, 12 (8) 1365–1377 <https://doi.org/10.1016/j.jchf.2024.03.001>



Health Innovation
Yorkshire & Humber



Humber and North Yorkshire
Health and Care Partnership



West Yorkshire
Health and Care Partnership

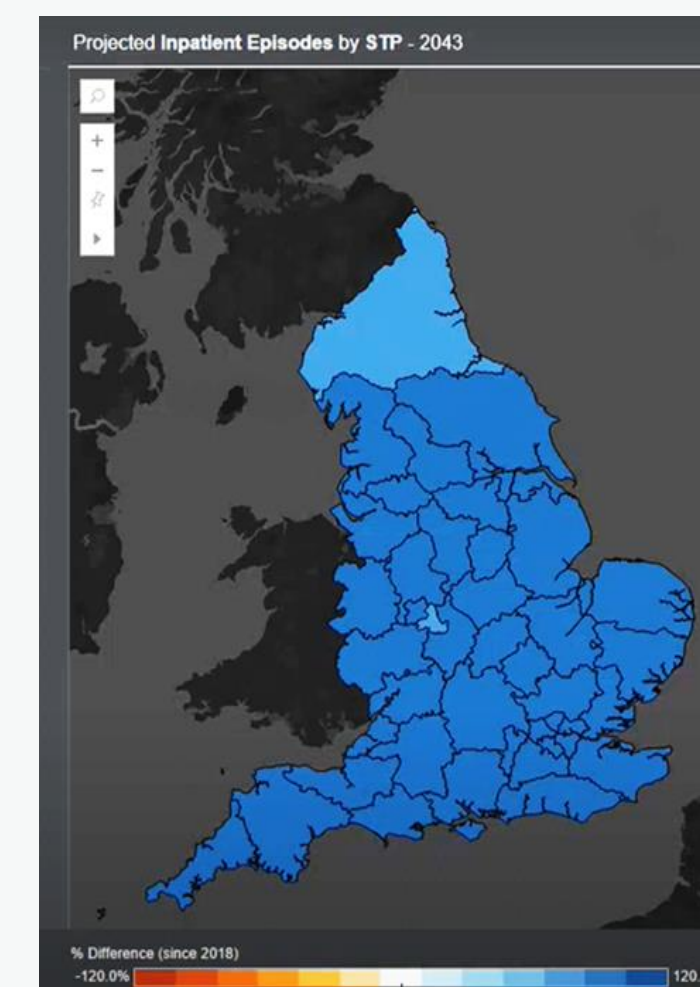
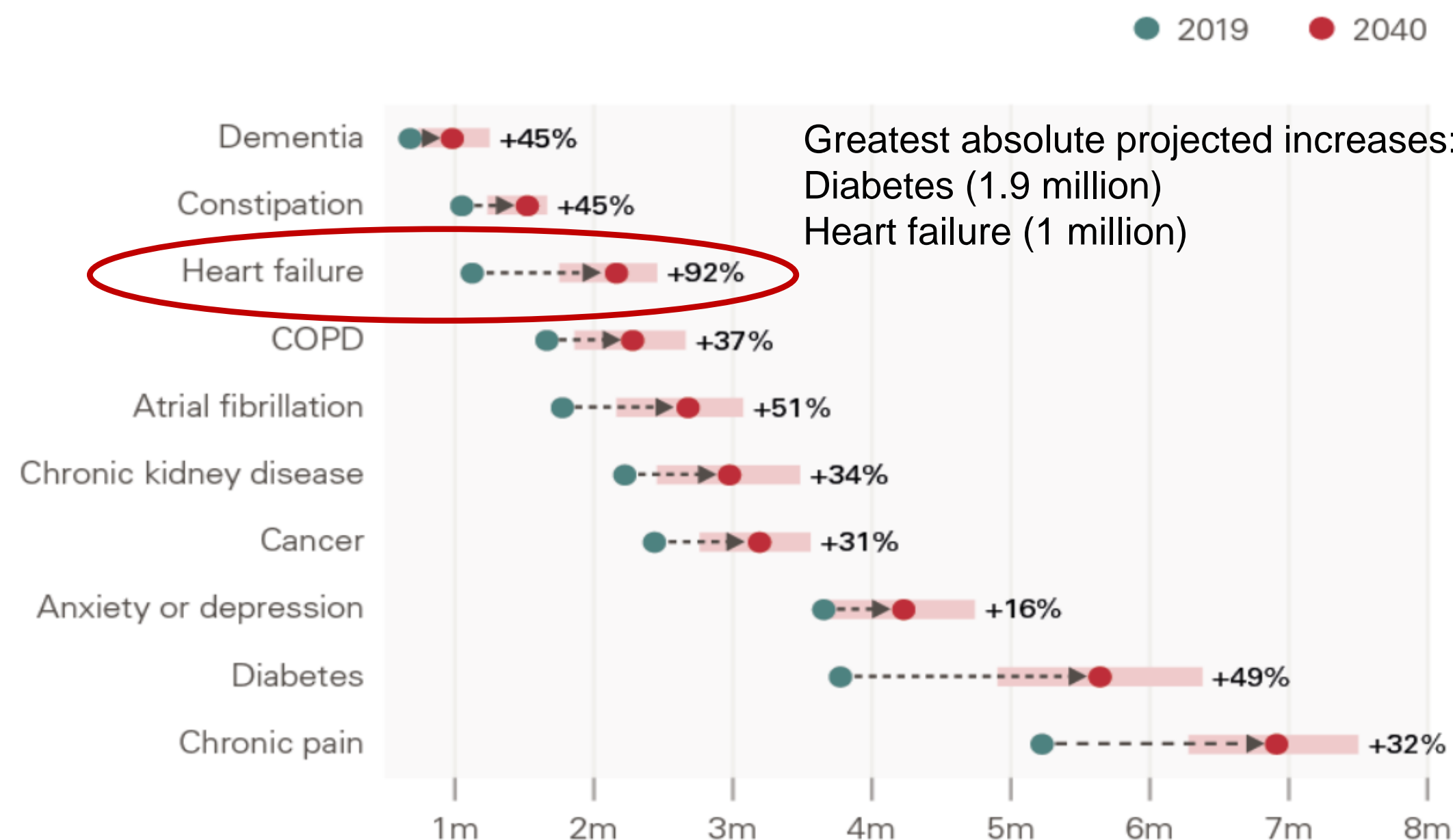


Pumping Marvellous
The heart failure charity



Health in 2040: projected patterns of illness in England

Figure E3: Projected total number of diagnosed cases for the 10 conditions with the highest impact on health care use and mortality among those aged 30 years and older, including demographic changes, England, 2019 and projected for 2040



Projected cardiology IP : HEE

Summary of Heart Failure Academy learning



Social media



Bite Sized
Online learning
'The Map'



Recorded presentations
Q&A Webinars



Face to face study
days
(One in each ICB,
multiprofessional)



Telegram group
Community of
practice (immediate
specialist support)

To view our programme of events, visit: www.hfacademy.co.uk



Health Innovation
Yorkshire & Humber



Humber and North Yorkshire
Health and Care Partnership



South Yorkshire and Bassetlaw
Integrated Care System

West Yorkshire
Health and Care Partnership



NHS
The Leeds
Teaching Hospitals
NHS Trust

NHS
England

Summary of Heart Failure Academy learning

Access the Heart Failure Academy website
www.hfacademy.co.uk

- Overview
- Heart Failure Academy Map
- Events
- Campaign resources and evaluation
- Local and national resources
- Telegram group
 - Opportunity to join community
 - Get an immediate response to queries from HF specialists



The Heart Failure Academy Map

How to use the 'Navigating the heart failure journey' patient journey map

The Heart Failure Academy map of the patient's journey can be used as:

1. A bite sized learning tool
2. An aide memoir to support decision making and next steps in every day practice

1. A bite sized learning tool – one stop released each week

Over the next few weeks, to support healthcare professionals in Yorkshire and the Humber to recognise the signs and symptoms of heart failure and support a timely diagnosis, we will release one set of bite sized learning each week from our 'Navigating the Heart Failure Journey Map'.

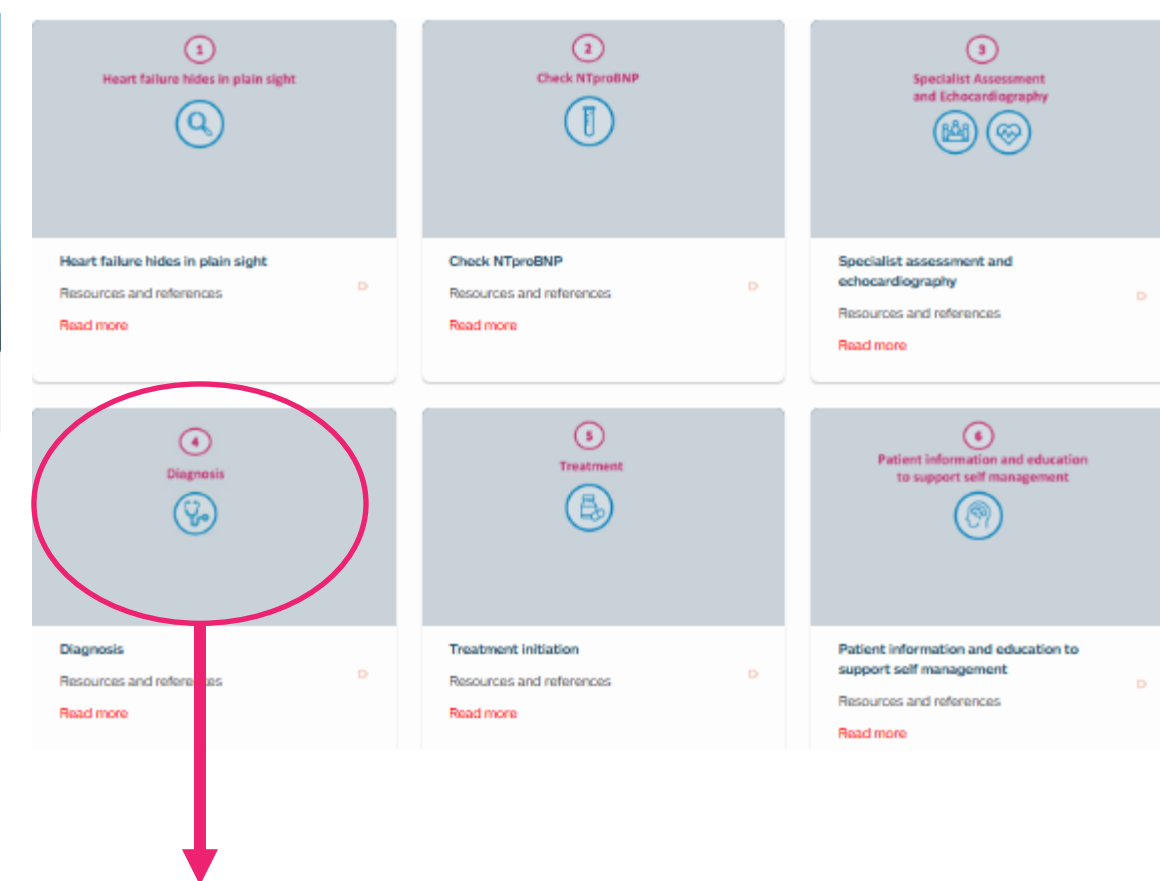
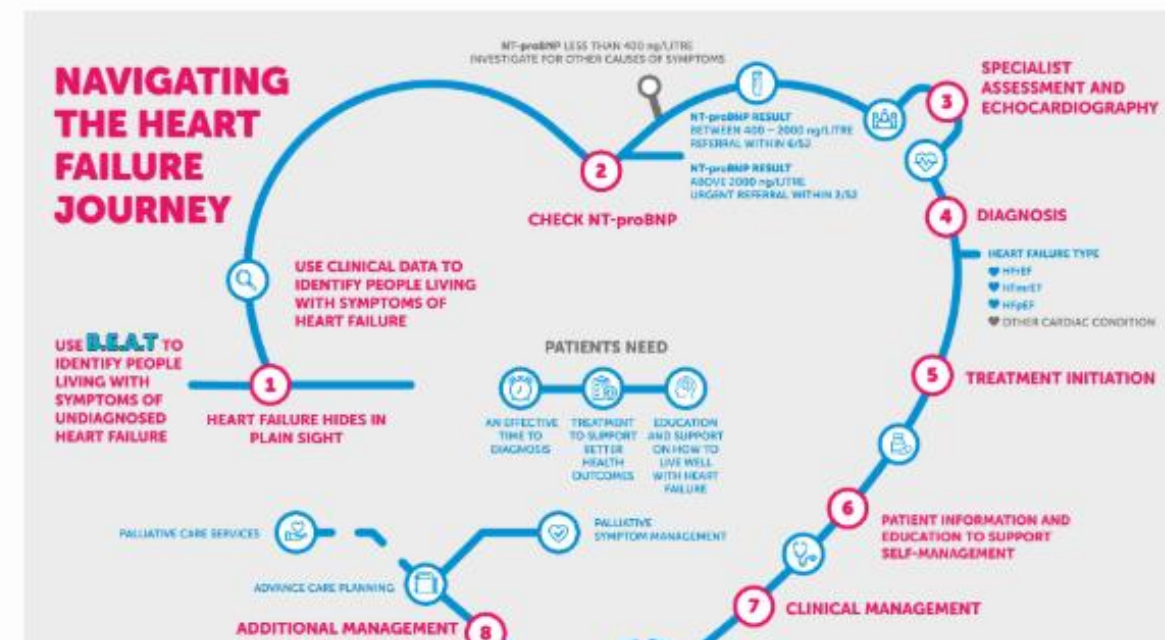
How to approach the learning

1. Click on the map to download a PDF that you can enlarge.
2. Familiarise yourself with each map 'stop' which represents a key stage in the heart failure journey.
3. Each map stop has an associated short video (duration listed to help you manage your time), key learning and references. Access these in the related tab at the bottom of this screen*.
4. Before you start the learning, make a note of your confidence in supporting people living with unrecognised heart failure at each stage of their heart failure journey represented by a numbered 'stop' on the map (we will ask you your score in our evaluation).

*When all the map stops have been released, the videos will be embedded within the heart failure map.

2. An aide Memoir

Alternatively if you feel confident in supporting people living with heart failure, you could download the map and use it as an aide memoir.



Diagnosis

Posted: 25th April 2025

The duration of this video is 7 minutes 22 secs



In this video we:

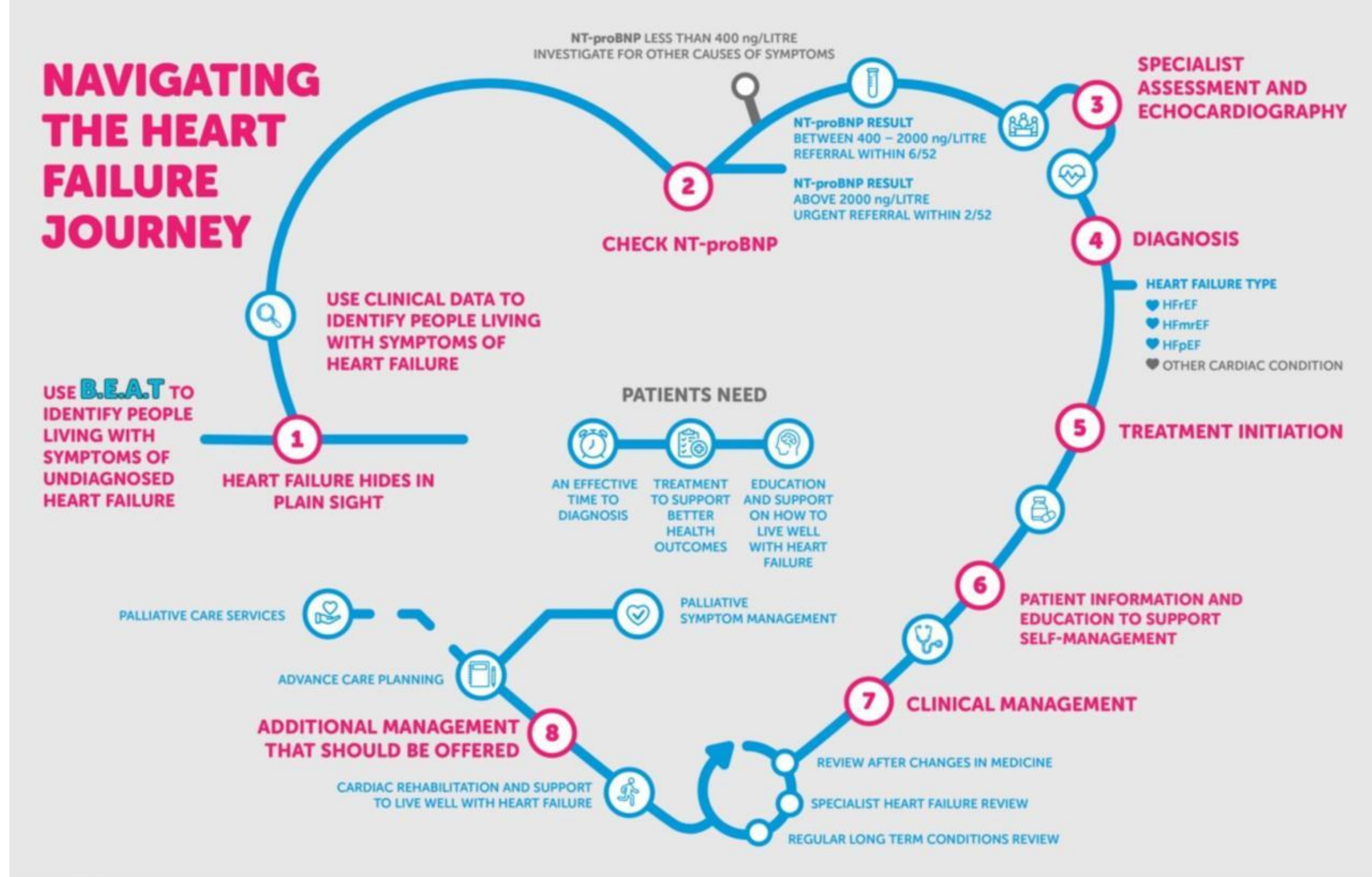
- Introduce the different types or phenotypes of heart failure:
 - Heart Failure with reduced Ejection Fraction (HFrEF)
 - Heart Failure with moderately reduced Ejection Fraction (HFmrEF)
 - Heart Failure with preserved Ejection Fraction (HFpEF)
- think about what will be seen on an echocardiogram and how this may be described on an echocardiogram report so that you can discuss this with people living with heart failure.

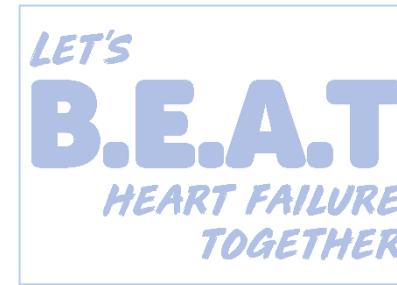
We hope this video will help you interpret hospital letters and develop your confidence to discuss the findings in echocardiogram reports during conversations and consultations with people living with heart failure and their carers.

Last updated: 2 June 2025

Resources +
References +

The Map



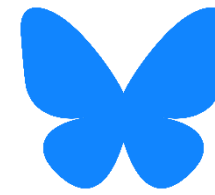


Thank you
Any questions?

info@learn.hfacademy.co.uk



@_HF_Academy_



@hf-academy.bsky.social



Health Innovation
Yorkshire & Humber



Humber and North Yorkshire
Health and Care Partnership



South Yorkshire and Bassetlaw
Integrated Care System

West Yorkshire
Health and Care Partnership



Pumping Marvellous
The heart failure charity

NHS
The Leeds
Teaching Hospitals
NHS Trust

NHS
England