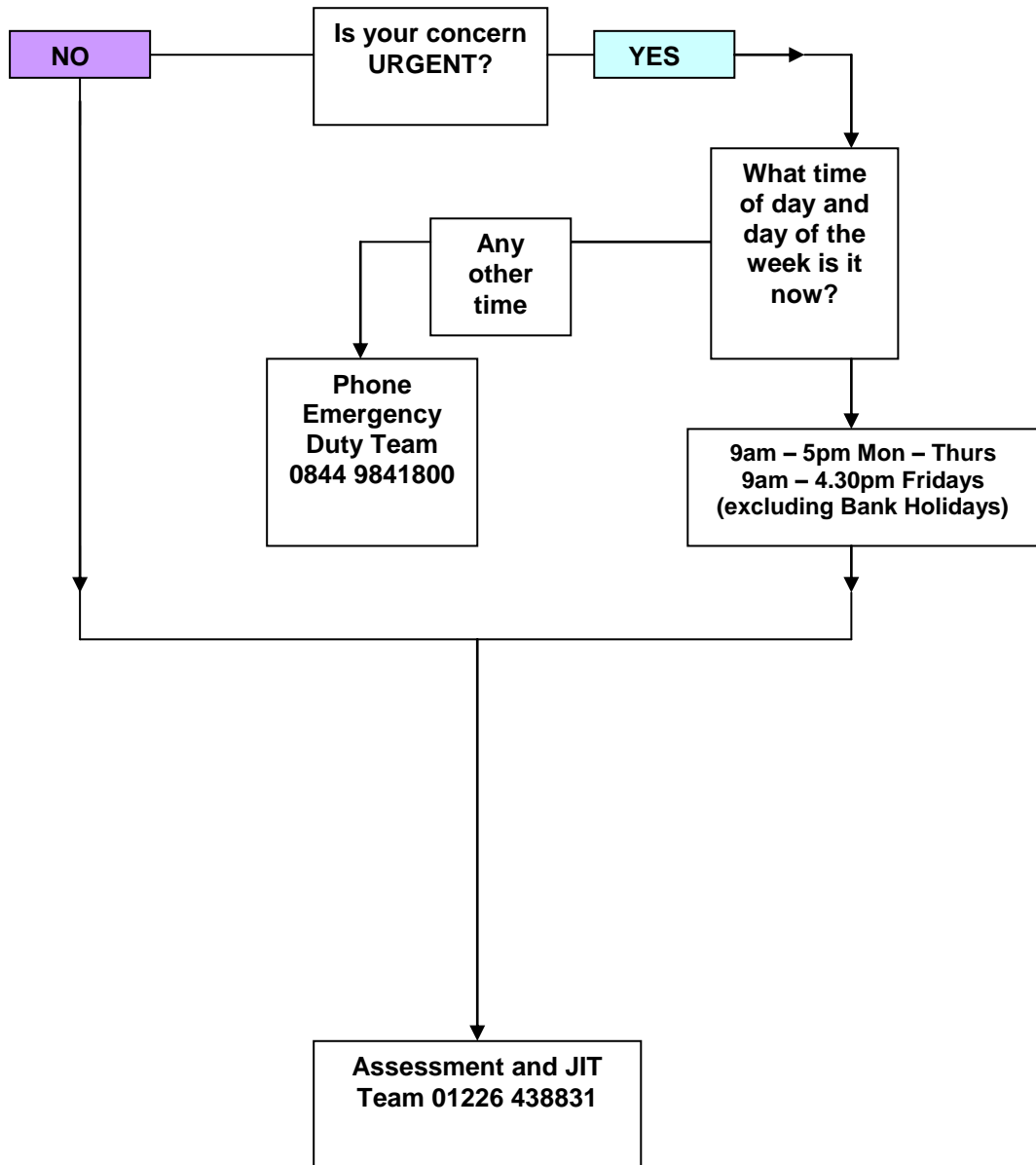


WHO DO I CONTACT IF I AM CONCERNED ABOUT THE WELFARE OF A CHILD?



If you have a concern about a child please follow the Thresholds of Intervention document to aid your decision making. If you believe the child is suffering or at risk of suffering significant harm or is a Child in Need contact the Assessment & JIT team they will require the information below:

- Name of child
- Age of Child and date of birth
- Address of child
- Name and address of the parent or carer of child
- What has happened which causes you to be concerned?
-

This must be followed up in writing using the request for service form available on BSCB website

If you have a concern about a child

.You can log an enquiry with the list of children who have a child protection plan. An enquiry to the list involves a two way exchange of information. The enquirer is informed of all relevant information held about a child or family, and the list records relevant information about the enquirer and reason for their concern. This may inform your decision to make a referral to Children and Families Social Care.

How to access the list:

During office hours (8.45-5pm weekdays) enquiries should be made to the Safeguarding Children's Unit on 01226 772400

Disabled Children Team on 01226 774050

Out of hours enquiries should be made to the Emergency Duty Team On 0844 984-1800 (Sat 24 hours, Sunday 24hrs)

Where can you get advice?

If you are unsure and need help in your decision contact one of the professionals below for advice prior to contacting Social Care:

Designated Nurse Sharon Galvin 01226 433708 x3708/3731

Designated Doctor Saqib Iqbal on 01226 433184

Named Doctor Ken McDonald on 01226 4336608 x3608

Named Doctor BHNFT Diarmuid Kerrin on 01226 432278 bleep 468

They will give you advice and support if you are unsure what you should do.

Access the Barnsley Safeguarding Children procedures via:

www.safeguardingchildrenbarnsley.com or CCG Intranet site – Safeguarding Children