



# South Yorkshire, Bassetlaw and North Derbyshire Cancer Alliance

## Implementing FIT for Symptomatic Patients

16<sup>th</sup> January 2019

Dr Stephanie Edgar, Cancer Research UK Strategic GP for South Yorkshire, Bassetlaw and North Derbyshire

# Faecal Calprotectin

- Protein excreted from WBC during inflammation
- IBS common in GP, up to 20% of population, IBD 3%
- Endoscopy not needed to diagnose these patients
- FCP level correlates with amount of inflammation
- Normal FCP strongly predicts for IBS and significantly raised FCP for IBD
- Pilots have shown a 40-57% reduction in new hospital outpatients' appointments and 21-50% reduction in colonoscopies
- One stool sample

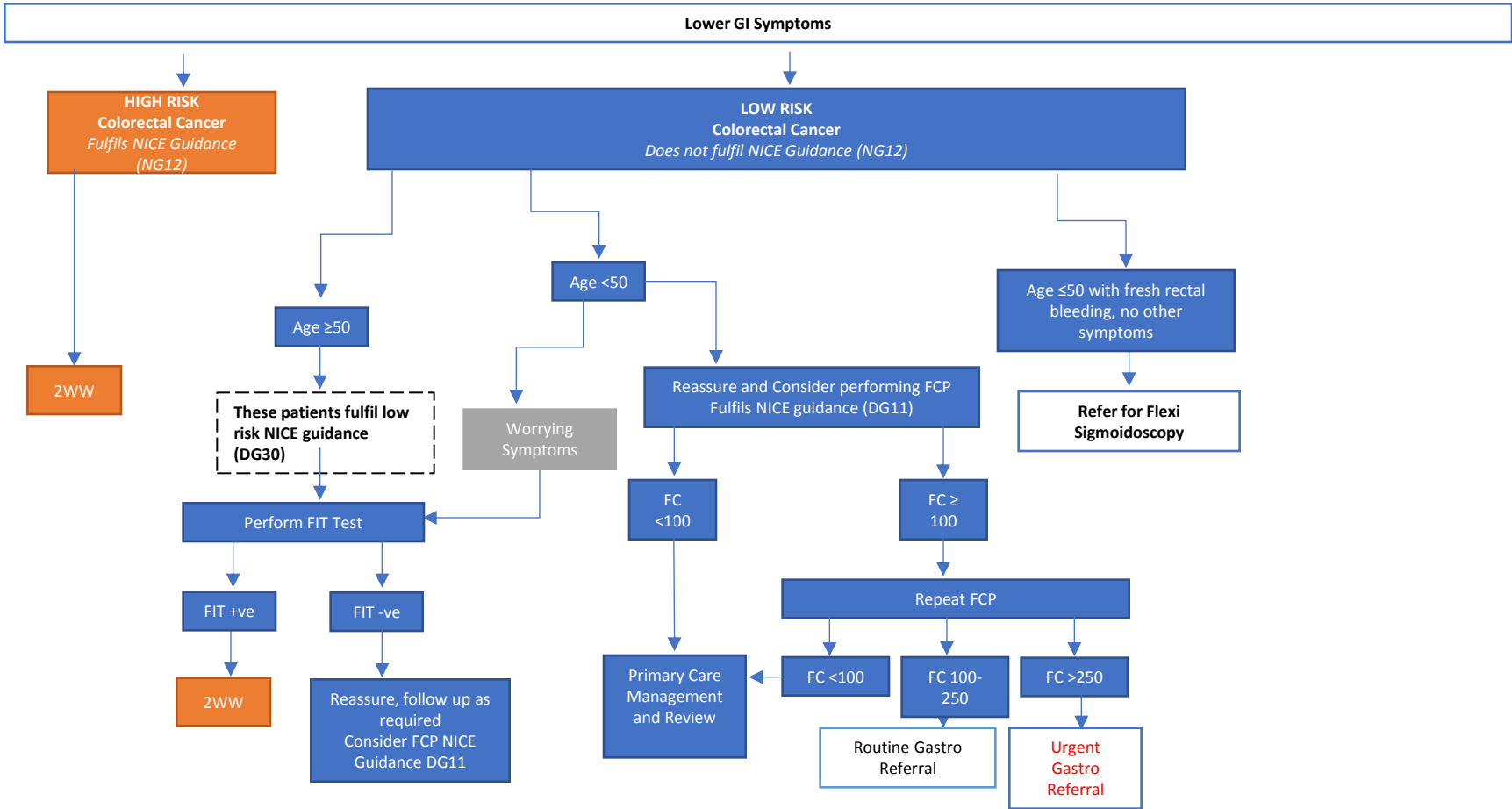


# Faecal Immunochemical test (FIT)

- Uses antibodies that recognise human Hb
- Can quantify amount of blood in single stool sample
- If abnormal further investigation needed
- One sample
- High negative predictive value
- Being brought into screening programme later this year –  
**RANGES ARE DIFFERENT SO DO NOT RELY ON THESE IF PATIENT SYMPTOMATIC**



# Integrated Lower GI Pathway



Full guidance can be seen at the website-  
Health and Care Working together in South  
Yorkshire and Bassetlaw, Integrated Lower  
GI Pathway

Any Questions?

