


GP meeting


Dr Matt Kinsella

Consultant Radiologist

Do I dare ask.....

[Why iRefer?](#)[Products & Pricing](#)[Guidelines](#)

Find the guidelines you need:



Breast☐

Obstetrics and gynaecology☐

ENT/ head and neck☐

Chest and cardiovascular system☐

Oncology☐

Interventional radiology☐

Musculoskeletal system☐

Urogenital and adrenal☐

Neurological system☐

Gastrointestinal system☐

Trauma☐

☒ Asymptomatic?




12 'Asymptomatic' guidelines found

Sort by: Relevance ↓ Code ↑ ↓ Title ↑ ↓




Adult B01

[Share](#)
[Bookmark](#)

(See also B05)

Investigation	Dose 	Recommendation 	Code
Mammography		Not Indicated [B]	The <40 car

Adult B04

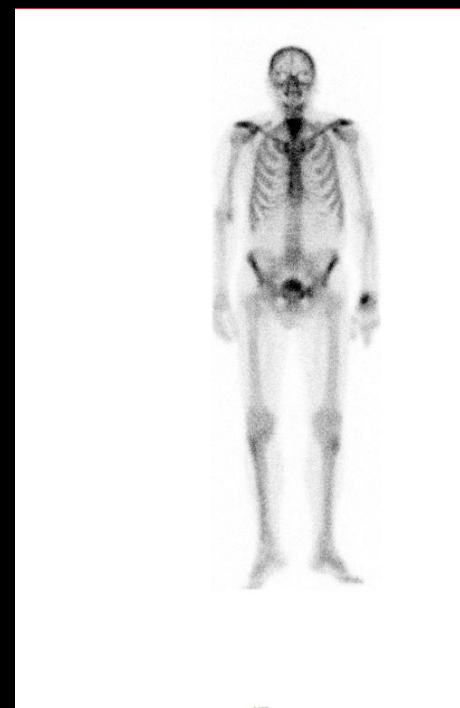
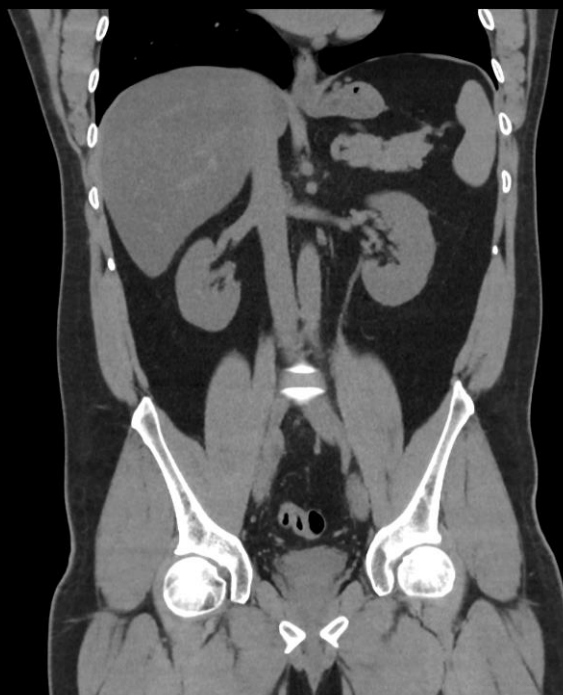
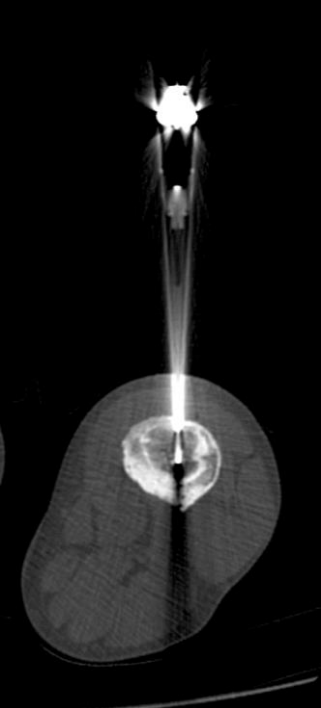
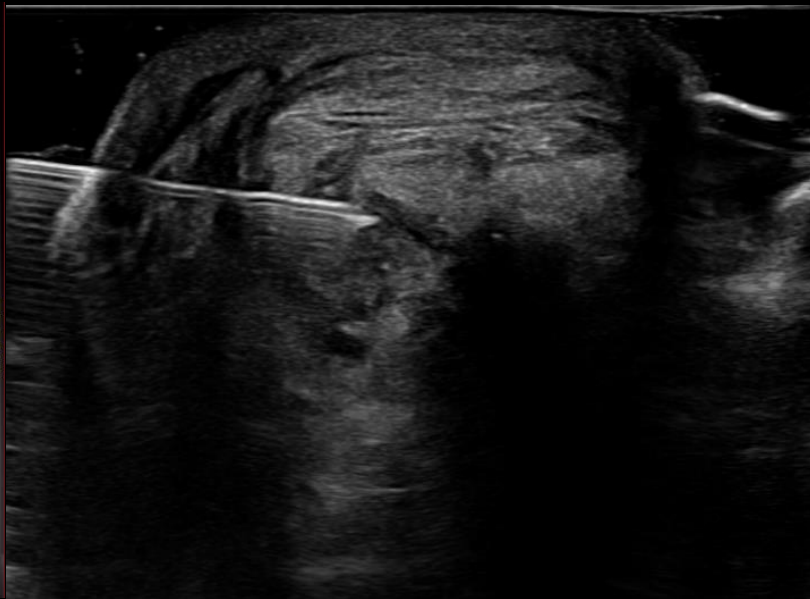
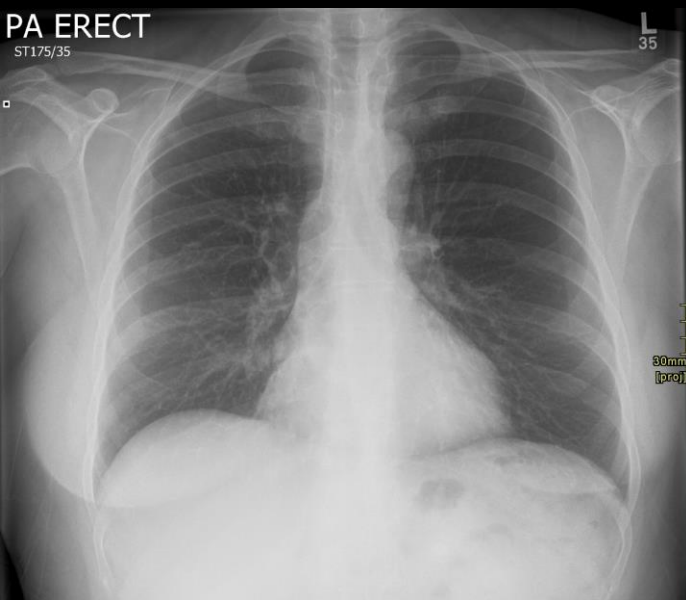
Investigation	Dose 	Recommendation 	Code
Mammography		Indicated [A]	The sup

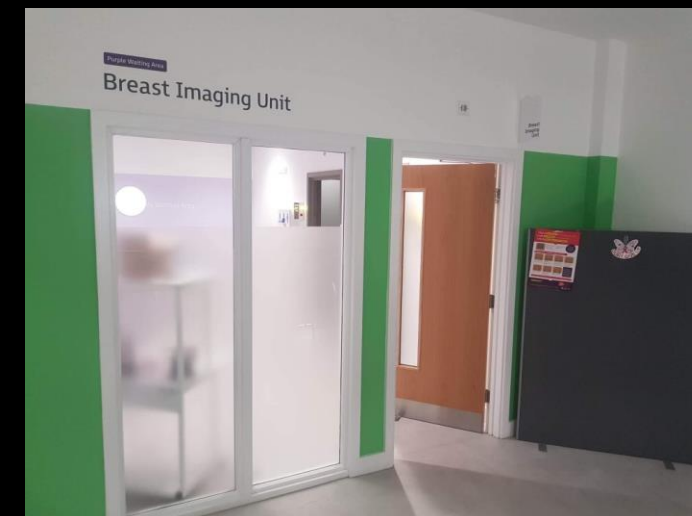
alison.lamb11@nhs.net

maxineharrison@nhs.net

Plan

- Our service
- CDC
- Referrals
- Codes and alerts
- Q and A







bdg-tr.pacsteam@nhs.net



Based on the chest radiograph appearances, your patient requires further imaging with CT. Cancer Services will alert the Cancer Nurse Specialist to this report and the nurse will contact your patient directly to arrange blood tests and a CT scan of the chest and upper abdomen.

This report may contain an unexpected or important finding.
Further clinical and / or radiological investigation may be required.
Prompt urgent attention to the report is advised.
Please ensure and document that this report has been acted upon.

Comment

Appearances may represent malignancy and or require further investigation on a 2ww pathway to exclude this.

Your patient now requires further imaging:

** delete as appropriate**

**Staging CT Thorax and abdomen

**Staging CT chest / abdomen/ pelvis

**MRI (BODY PART)

**Superficial / low risk Biopsy

A Cancer Specialist Nurse has been alerted to this report and will contact your patient directly to arrange blood tests and recommended tests.

This report may contain an unexpected or important finding.

Further clinical and / or radiological investigation may be required.

Prompt urgent attention to the report is advised.

Please ensure and document that this report has been acted upon.

This report contains a non-critical finding.

Electronic notification has been sent automatically to the referrer.

Please ensure and document that this report has been acted upon.

This report contains a CRITICAL finding requiring prompt urgent attention and action.

The referring team has been contacted.

Please ensure and document that this report has been acted upon.

Provisional new cancer diagnosis

Significant unexpected change in a known cancer

*(Delete as appropriate)

Please discuss in xxxSPECIFY HERExxx MDT.

Please ensure and document that this report has been acted upon.

