

Warm Homes, Healthy Futures

BEST Event
Wednesday 18th June 2025

Lucy Levitt – Project Officer
Warm Homes Team
Strategic Housing

Impact of cold homes

Estimated that NHS spending over £1bn a year on treating people affected by poor quality housing ([BRE 2024](#))

Benefit of a prevented harm from excess cold is £52,230 cost saving to the NHS or £728,182 cost saving to society (BRE estimate- 23/24 prices)

Vulnerable most at risk of cold related morbidity and mortality:

- Impact on patients - education, employment and mental and physical health.
- Impact on property- [damp, mould and disrepair](#) (Awaabs Law)

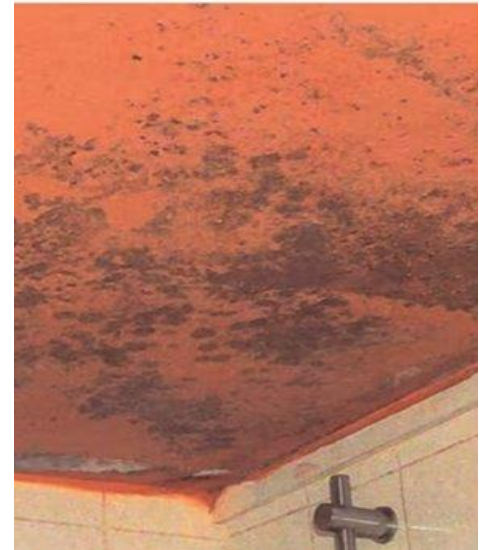
[NICE Guidance](#): Excess winter deaths and illness and the health risks associated with cold homes (NG6)

Recommendation 5: Make every contact count by assessing the heating needs of people who use primary health and home care services

Recommendation 7 Discharge vulnerable people from health or social care settings to a warm home



**Barnsley – the place
of possibilities.**

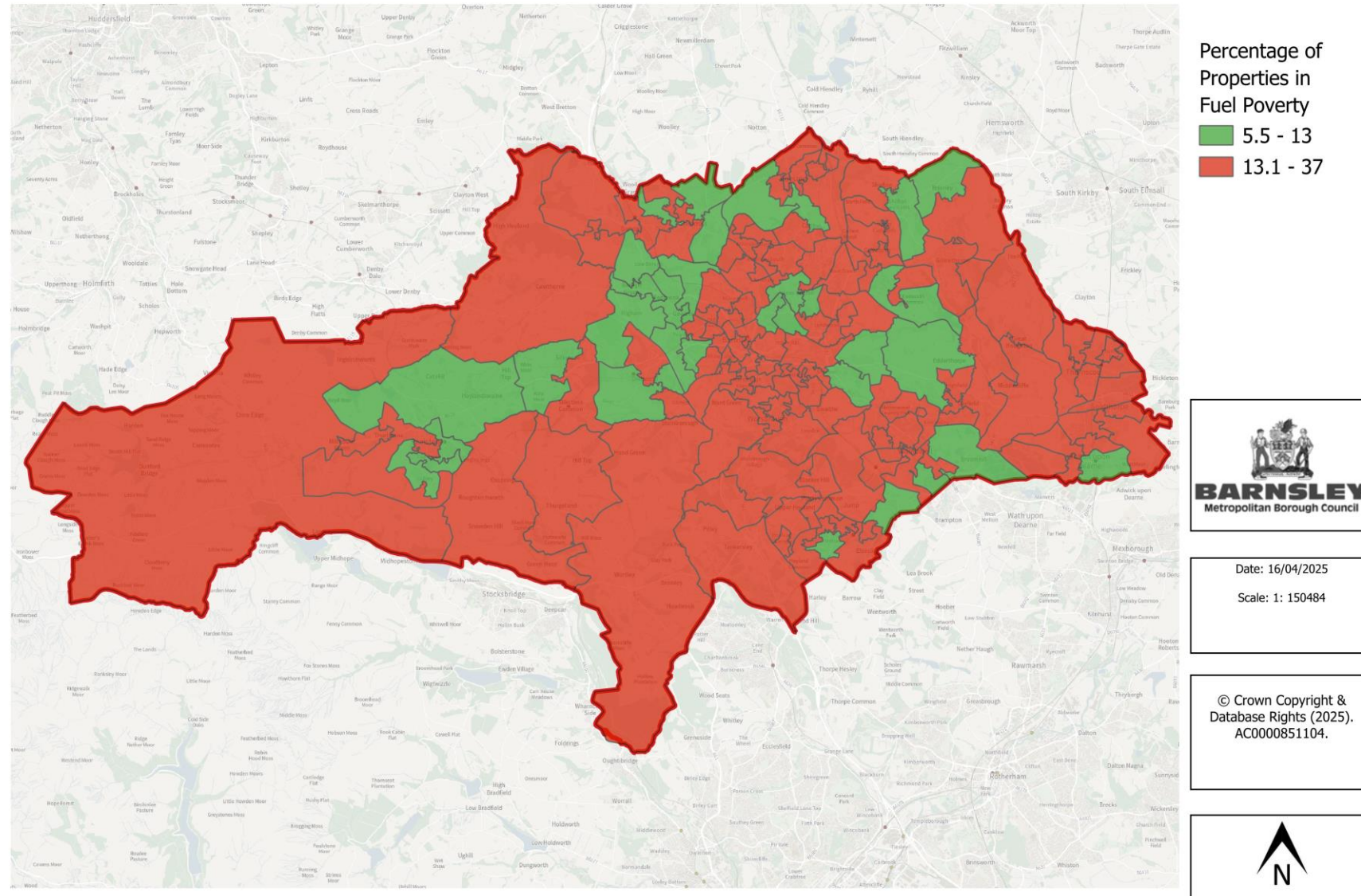


BARNSELY
Metropolitan Borough Council

Healthy life expectancy for women at birth (2021–23) by non-decent privately rented homes: England



Percentage of Properties in Fuel Poverty 2022 Data



20
30

Barnsley – the place
of possibilities.



BARNSELY
Metropolitan Borough Council

The need for connected health and fuel poverty support

Damp homes linked to 30-50% increase in respiratory problems.

1/4 young people living in cold homes have multiple mental health risks, compared to 1/20 in warm homes.

Hospital admissions for COPD four times more likely during winter.



Who is most affected by cold homes?



Older people



People on a low income



People with health issues



Pregnant people



Babies and children



Families



Warm Homes, Healthy Futures scheme

Project aims

To make every contact count by working with voluntary, community, health and social care professionals who are in a unique position to speak to Barnsley families most at risk of living in a cold home and help them access the support they need.

We will create warm, safe and healthy homes by:

- Working with NHS colleagues to directly contact most vulnerable patients
- Dedicated work to promote, offer and work with services through targeted stakeholder engagement
- Strengthen partnership working by building up bespoke pathways e.g. SY Ambulance service
- Work in communities to engage those not already accessing services
- Creation of clear and flexible referral route into the offer
- **Create lasting legacy of successful health and housing integrated working!**



Barnsley Council's Offer

- **Energy advice and support** tackling fuel poverty, energy debt, energy saving measures and priority services register.
- **Carbon Monoxide awareness** – possible CO sensor and gas appliance servicing
- **Support with Grants for heating and energy efficiency measures** – possible replacement boilers and insulation for home-owners and private rented sector
- **Signposting** for crisis support such as (fuel vouchers, winter warmth packs, replacement appliances, damp & mould, safety issues)
- **Benefit and income maximization**



Barnsley – the place
of possibilities.



Barnsley Council's Warm Homes Team are proud to be working with leading fuel poverty charity National Energy Action to deliver the **Warm Homes, Healthy Futures** scheme to support Barnsley families to live in warm, safe and healthy homes.

What's on offer?

Holistic, in-depth energy advice and support bespoke to the needs of the householder. This could include CO sensor and gas appliance servicing, support with boiler and insulation grants, crisis support (fuel vouchers, winter warmth packs) and benefit checks, support and income maximisation.

Who's eligible?

Anyone with a health condition or disability made worse or more difficult to manage by a cold, damp, poor quality home who is referred into the programme by a health professional.

How do I refer them to the programme?

Send their name, address, contact details and information about their health condition to the Warm Homes team on 01226 77 33 66 or warmhomes@barnsley.gov.uk (consent must be given prior to referral).

The team will then contact them to do an assessment form to determine what support is required based upon their needs.



How to refer patients and residents into Warm Homes Healthy Futures in Barnsley



1) Identify that resident has condition made worse by cold. Obtain consent to refer and pass on contact details.

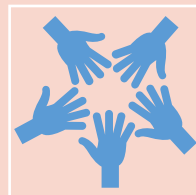


2) Refer resident into the Warm Homes Team via secure email to warmhomes@barnsley.gov.uk

Include name, contact details and supporting information



3) Warm Homes team pick up the enquiry and contact the residents directly to do full assessment in person or over the phone.



4) Support, advice and referrals carried out according to need. Feedback provided on request.



Barnsley – the place
of possibilities.



BARNSELY
Metropolitan Borough Council

ECO4-Flex Programme- Free government scheme for private rented and owner-occupied properties.

Available Measures	Who can apply?	Eligibility Criteria
<p>Cavity wall insulation Loft insulation Underfloor insulation Room in roof insulation Replacement Boilers Solar Panels / ASHP</p> <p>This is not an exhaustive list- see Ofgem for full guidance*</p>	<p>The scheme is open to private tenants with EPC of E or below and homeowners with an EPC of D or below.</p> <p>There is no limit on the number of homes that a landlord can claim the grant for. As the assessment is based on the tenant.</p> <p>Criteria set by OFGEM.</p>	<p>Tenant's household income must be less than £31,000 per annum OR have a qualifying medical condition</p> <p>Energy Performance Certificate rating of D-G for homeowners & E-G for PRS.</p>



Contact details for Warm Homes Team

Telephone: 01226 773366 (answerphone out of hours)

Email: warmhomes@barnsley.gov.uk

Website: [Warm homes team](#)

Facebook: [Barnsley Council - Warm Homes](#)

Face to face - attendance at events

Training - available to front line workers



**Barnsley – the place
of possibilities.**





THANKS FOR LISTENING



ANY QUESTIONS??



Barnsley – the place
of possibilities.

