

National Pharmacy Audit

- ❖ Patients with diabetes
- ❖ Encourage uptake of flu vaccination
- ❖ Conduct audit between October and December 16th for one week
- ❖ Enter data via on line portal by 30th December 2018

70% of people with diabetes identified by the pharmacy staff during the dispensing of a prescription or in another way, are offered public health advice on the importance of them receiving a flu vaccination.

PSNC

NHS
England

**2018/19 Community Pharmacy
Contractual Framework National
Clinical Audit**

Flu vaccination for people with diabetes

October 2018

NHS England Publications Gateway Reference: 08528

www.psn.org.uk
www.england.nhs.uk

Quality Payment Scheme 2018/19

- **Updated gateway and quality criteria**
- **Review point 15th February 2019**
- **Correction period for contractors not meeting gateway criteria**

QPS 18/19 - Gateway Criteria

1. Must be offering an **advance service** *eg MUR, NMS, NUMSAS*
2. NHS.UK entry must be **up to date** including bank holiday hours.
3. Last completed **CPPQ** publicly available on NHS.UK page
4. Pharmacy staff must be able to **send and receive NHSmail** from their shared premises NHSmail account which must have at least **two live linked accounts**
5. IT operating system **compliance** with the **NHS Digital** Warranted Environmental Specification

QPS 18/19 - Quality Criteria

Patient Safety: Safety Report

(20 points)

1. Updated patient safety report (since last review)
2. Identifies and manages risk with specific look alike sound alike errors (LASA) identified from NRLS, including actions to prevent these
3. Upload any LASA reports to the NRLS and keep records

NHS top combination by likelihood and harm caused	
Propranolol	Prednisolone
Amlodipine	Amitriptyline
Carbamazepine	Carbimazole
Azathioprine	Azithromycin
Atenolol	Allopurinol

QPS 18/19 - Quality Criteria

Patient Safety: Risk Management (20 points)

1. 80% of registered pharmacy professionals have completed the CPPE Risk Management training
2. An example of a risk review for the premises

QPS 18/19 - Quality Criteria

Patient Safety: NSAID Audit

(20 points)

1. Complete NSAID audit
2. Notify GP where professional concerns raised
3. Share data with NHSE
4. Incorporate Learning

QPS 18/19 - Quality Criteria

Public Health: HLP and Children's Oral Health (15 points)

1. HLP level 1
2. 80% of staff have completed CPPE children's oral health training assessment

QPS 18/19 - Quality Criteria

Digital/Urgent Care: NHS111 Dos

(2.5 points)

1. NHS 111 Directory of Services up to date

QPS 18/19 - Quality Criteria

Workforce: Dementia Friends

(2.5 points)

1. 80% of all pharmacy staff are trained “Dementia Friends”

QPS 18/19 - Quality Criteria

Clinical effectiveness: Asthma Review (20 points)

1. Evidence of asthma patients for whom more than 6 short acting bronchodilators were dispensed within a 6 month period have been referred
2. Evidence all children aged 5-15 prescribed an inhaled corticosteroid for asthma have a spacer and a personalised action plan or have been referred where this is not the case.



Advancing Inhaler Technique



Matt Auckland



Quality Payment Scheme: Clinical effectiveness criteria

- All children aged 5-15 years prescribed an inhaled corticosteroid for asthma have a spacer device

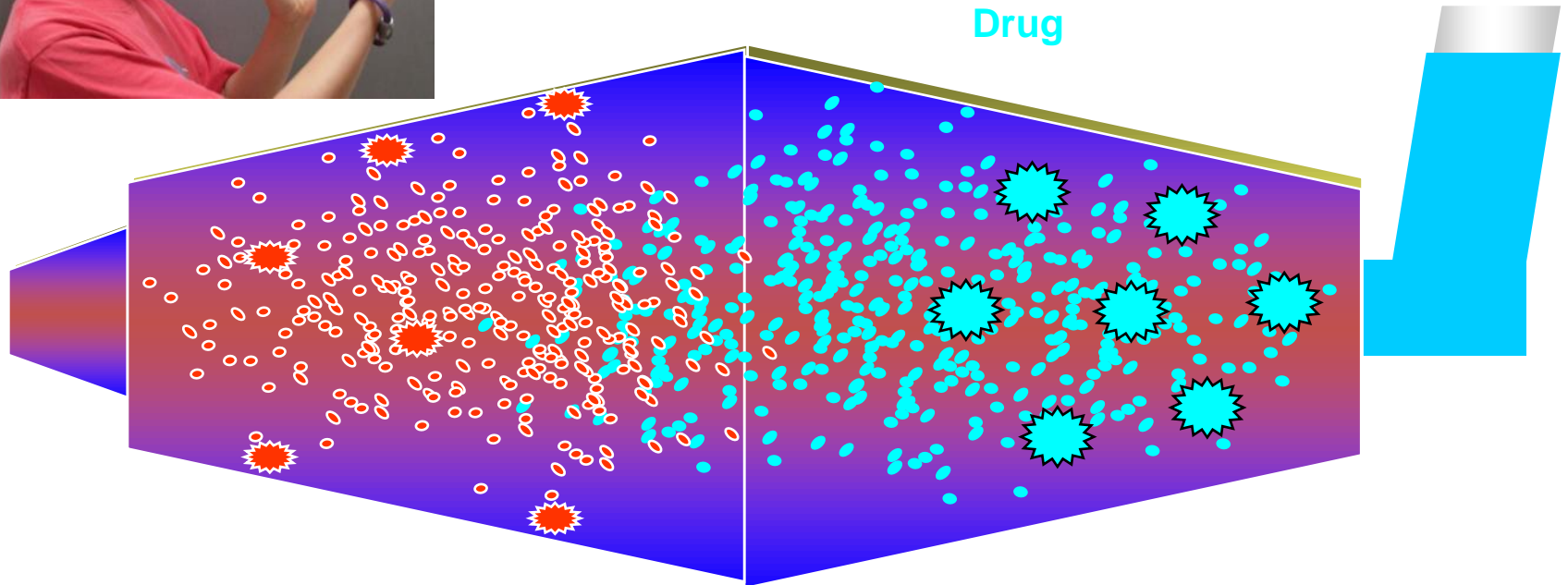
DO YOU KNOW WHY?



Spacer Devices – How they help



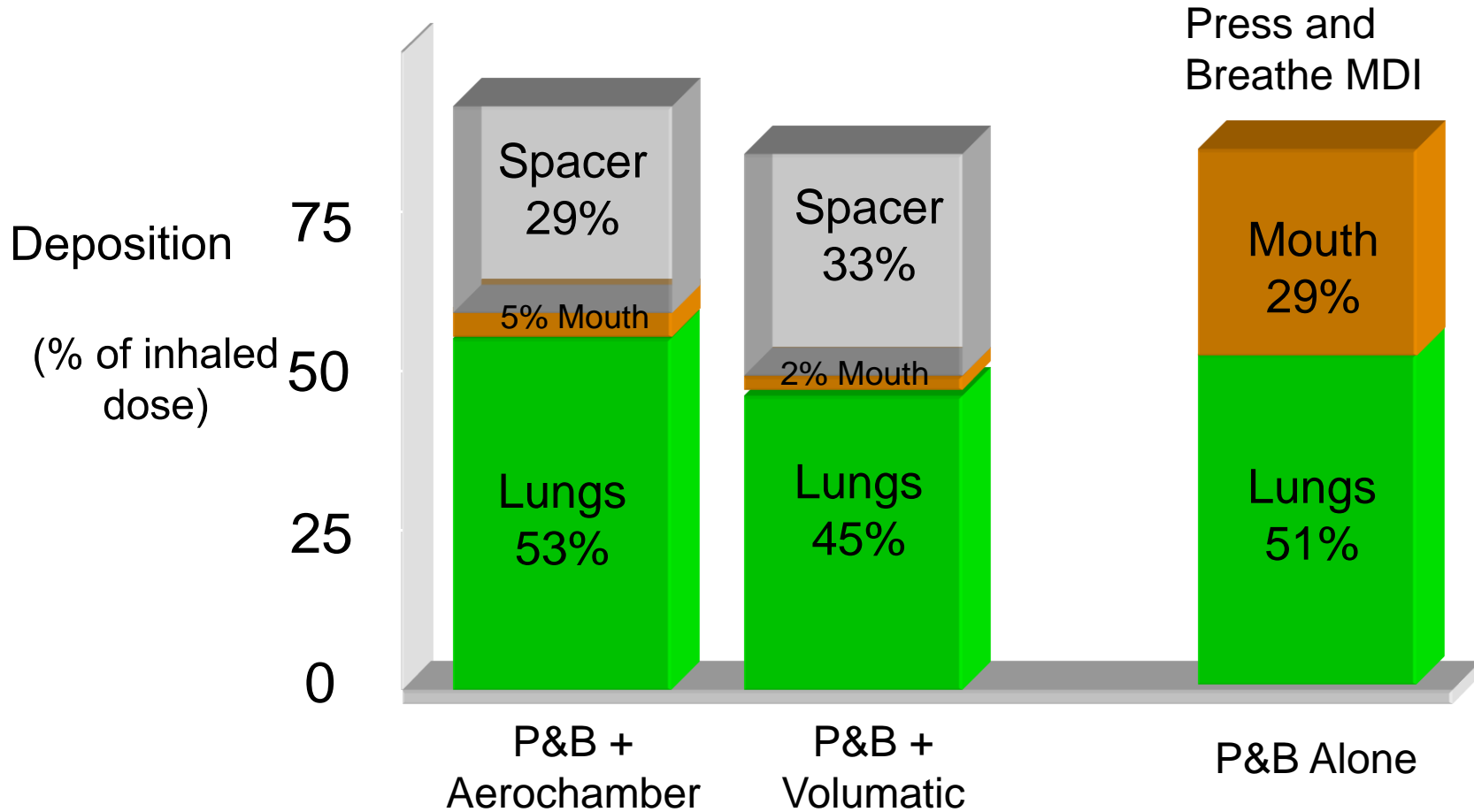
Metered Dose Inhaler (MDI)



1. Capture aerosol avoiding coordination problems
2. Reduces particles deposited in oropharynx



Lung deposition from HFA-Beclometasone provides equivalent lung deposition with or without add-on spacers



Providing NHS and public health pharmacy services

- MUR
- NMS
- Safeguarding
- Consultation skills
- Repeat dispensing
- Essential services
- NHS priorities
- Being service-ready
- Commissioners
- Commissioning CPPE
- Declaration of Competence
- Urgent care
- Public health
- Summary Care Records
- Mary Seacole Leadership Programme
- Quality Payments

Pharmacy Quality Payments Scheme

The Quality Payments Scheme, which forms part of the Community Pharmacy Contractual Framework (CPCF), was introduced from 1 December 2016. As part of the interim arrangements for 2018/19, an extension of the scheme has been agreed with a further review date in February 2019. At CPPE we offer learning to support you in achieving the risk management and children's oral health quality criteria.

Before you begin working through our learning we suggest that you download the CPPE *Quality Payments learning resources* document which offers support and guidance on how to achieve the quality criteria.

[Click here to access the CPPE *Quality Payments learning resources* document](#)

[If you are not a pharmacy professional click here to register with CPPE](#)

Click the following tabs where you will find an outline of the steps that you need to take to achieve these quality criteria.

[Children's oral health - the whole pharmacy team](#)

[Risk management - registered pharmacy professionals only](#)

Learning pathways

- Developing your career
- Providing pharmacy services
- Enhancing your skills
- Clinical pharmacy and therapeutics
- Supporting educators and trainers
- Supporting you

Quick links

- Access Optimise
- Book a workshop
- CPPE viewer
- Declaration of Competence
- MUR assessment
- Return to practice
- All future workshops
- Charges and fees
- Learning communities

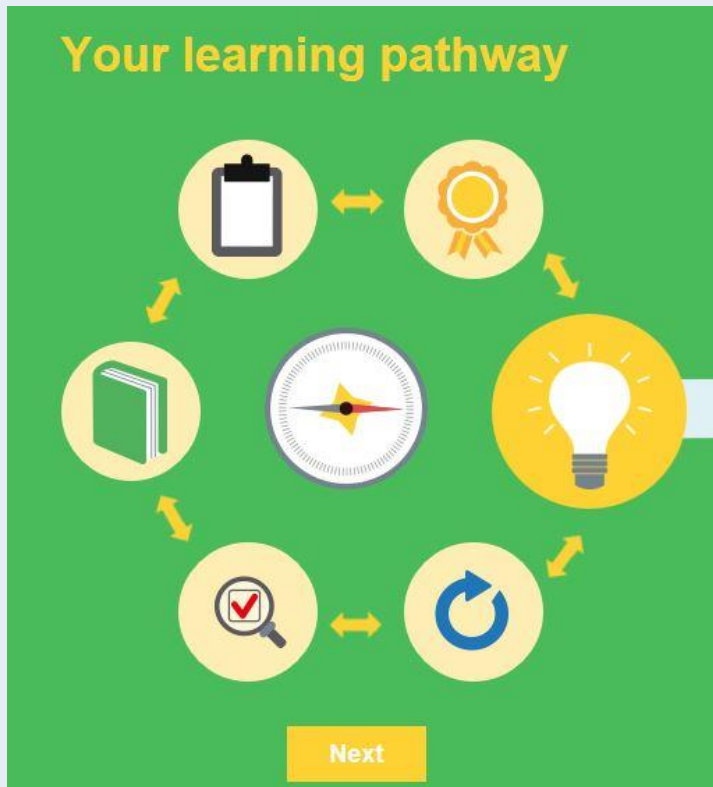
Useful links

- Go to the [Learningpharmacy.com™](#)
- Consultation skills for pharmacy practice
- General Pharmaceutical Council
- Royal Pharmaceutical Society
- Association of Pharmacy Technicians UK
- Pharmacist Support
- The University of Manchester
- Clinical Pharmacy Congress
- Canvas

CPPE Resources

- Download the learning resources document
- Workshops:
 - **Safeguarding Children and Vulnerable Adults**
21st November 2018 Cedar Court Hotel
 - **Patient Safety: an anticoagulant case study**
29th January 2019, Shaw Lane, Barnsley!!
 - **Antimicrobial Stewardship**
5 February 2019, The Quadrant
 - **Inhaler Technique - TBC**

www.consultationskillsforpharmacy.com



- Why?
- What standard?
- Where am I?
- How do I improve?
- Check my learning?
- Ongoing improvement?

www.cppe.ac.uk
info@cppe.ac.uk
0161 778 4000

Follow us on Twitter, Facebook, LinkedIn and YouTube:

-  www.twitter.com/cppeengland
-  www.facebook.com/cppeengland
-  www.linkedin.com/company/centre-for-pharmacy-postgraduate-education
-  www.cppe.ac.uk/youtube

QPS 18/19 - Quality Criteria - Summary

Domain	Criteria	Points	Value
Patient Safety	Safety Report	20	£640
Patient Safety	Risk Management	20	£640
Patient Safety	NSAID Audit	20	£640
Public Health	HLP and Children's Oral Health	15	£480
Digital/Urgent Care	NHS 111 DoS	2.5	£80
Clinical effectiveness	Asthma Review	20	£640
Workforce	Dementia Friends	2.5	£80
Total		100	£3200

Each point has a minimum value of £32 and a maximum value of £64

Commissioning update

- EHC
- *Pharmacyfirst*

EHC

- Phased introduction
- PGD – use POM pack
- Aged 14 to 24
- Barnsley residents or registered with Barnsley GP's
- Follow up from Spectrum via referral form

Pharmacyfirst

- Local consultation ended September 5th
- Changes due this autumn
- SYB 569 Million Reasons campaign

Health and care working together
in South Yorkshire and Bassetlaw



569 MILLION REASONS

SELF-CARE SAVES YOU TIME AND SAVES THE NHS MONEY



Waiting to see a GP or nurse?

Did you know that you can save your time and the NHS money by treating your minor conditions with medicines that can be bought over the counter from your local pharmacy or supermarket?

The NHS will save more than £569 million in prescription charges every year if we stop asking our GPs for over the counter medicines.

Please don't ask.

For further information see our leaflet or visit our website
www.569millionreasons.co.uk