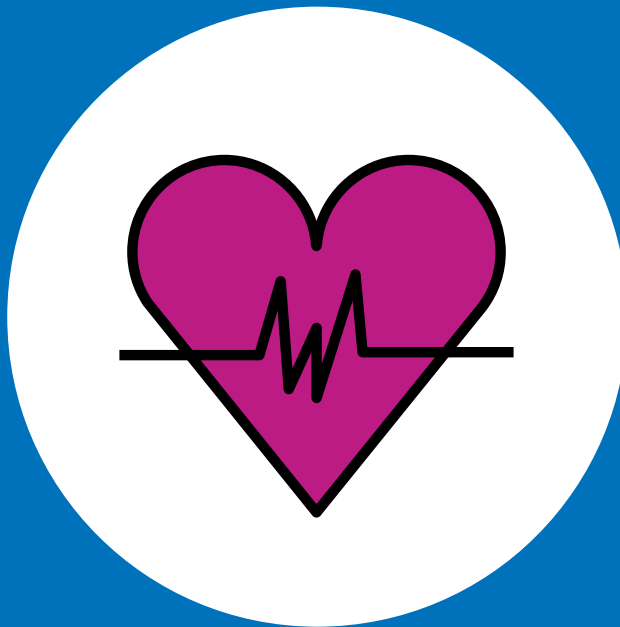




South West
Yorkshire Partnership
NHS Foundation Trust

Community heart failure service



Patient leaflet

With **all of us** in mind.

Who we are

We are a team of heart failure specialist nurses.

We work together with your GP, practice teams, cardiologist, and cardiac rehabilitation team to assess and support people with heart failure.

This can be caused by:

- Irregular heart rate
- Heart attacks
- Genetic causes
- High blood pressure
- Viral illnesses
- Endocrine issues
- Alcohol and recreational drug use

We provide:

- Educational support for people to understand the condition.
- Other health and wellbeing programmes.
- Clinic appointments to assess signs and symptoms of heart failure.
- Home visits for housebound patients.
- Management planning for adjusting the dose of medications to reduce symptoms.
- Support to GPs and practice staff in heart failure management.
- Hospital admission avoidance by supporting care at home.
- End of life care.



H **heart failure**



E **ducation**



A **nd**



R **ehabilitation**



T **reatment**
programme

Useful websites

Pumping Marvellous www.pumpingmarvellous.org

British Heart Foundation www.bhf.org.uk

Cardiomyopathy UK www.cardiomyopathy.org

Where we are

We carry out clinic assessments across the whole of Barnsley. We can also provide home visits for housebound patients.

Referrals

We accept referrals from hospital staff, GPs, consultants, and practice nurses.

Patients previously known to our service can self-refer.

If you have a positive test result of heart failure and are symptomatic, contact a healthcare provider. Once your referral is accepted a member of the team will contact you to arrange an education class and then to book a one to one clinic appointment.

Contact us

01226 644575

Feedback

If you would like to give your feedback on the service you have received, please complete a short survey at <http://ratenhs.uk/fmaqki>

If you require a copy of this leaflet in another format or language, please contact your healthcare worker at the Trust.