



NHS

Barnsley Hospital
NHS Foundation Trust

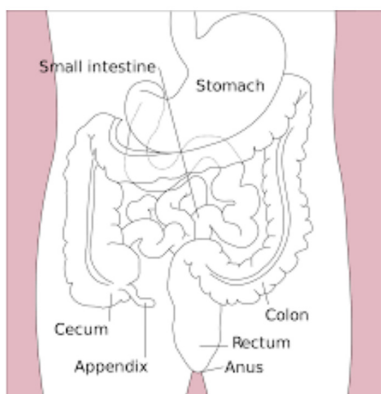
Cancer Services Department

Upper Gastro- Intestinal Service

(Upper Gi)



Patient Information Leaflet



Telephone Triage Assessment

Telephone Triage

You have been referred by your GP for a telephone triage assessment with the Upper GI Service at Barnsley Hospital. The aim of the information in this leaflet is to help explain how the telephone triage process works and what is likely to happen.

The Upper GI Service deals with patients experiencing problems with the upper part of their gastrointestinal tract; these can include conditions in your stomach, oesophagus, liver and pancreas. All these conditions can cause different symptoms, which have to be investigated as a suspicion of cancer.

- Abdominal (tummy) pain.
- Heartburn or indigestion.
- Persistently feeling and being sick.
- Difficulties swallowing or pain when swallowing (dysphagia).
- A reduced number of red blood cells

(anaemia), which may be caused by persistent internal bleeding.

- Severe bleeding, which may have caused a sudden, sharp pain in your abdomen, vomiting blood or very dark or “tar-like” poo.
- Jaundice (this may require you to be admitted to hospital).

It is important to have your symptoms checked

The triage nurse will contact you by telephone, so please ensure the GP has your up to date telephone number, which can be a landline or mobile number. The triage nurse will contact you within 3 days of your visit to your GP. If you do not hear from the team, please contact us on: **01226 432000**.

During this call, which will take around 30 minutes, you will be asked questions about your health, any medication you take, your symptoms and personal circumstances.

If there are any medications you may be required to stop taking before your procedure, the nurse will also advise you of this. If you are on any anti coagulants these may need adjustment prior to investigations, which again the nurse will advise.

What if I choose not to have the test you recommend?

You will have the opportunity to discuss this with the triage nurse. If following this you do not feel you want to proceed straight to investigations then you will be offered an appointment in outpatients within two weeks.

The tests you may need include:

Gastroscopy

A test where a thin flexible telescope with a camera on the end is inserted through the mouth into the oesophagus (gullet) and down towards the stomach and small intestine. The clinician may need to take a biopsy which is a small sample of tissue which is examined more closely under a microscope.

The procedure often takes less than 15 minutes. A local anaesthetic spray will be used to numb your throat for the procedure and you'll be asked beforehand if you'd like to have a sedative. The sedative will help you feel drowsy and relaxed during the procedure.

Ultrasound

A probe is used with a gel which is pressed on to your abdomen. It is a non-invasive sound wave picture of the softer parts of the interior of your anatomy, showing details which cannot be revealed by an X-ray.

CT

A computerised tomography (CT) scan uses X-rays and a computer to create detailed images of the inside of the body. CT scans produce detailed images of many structures inside the body, they can be used to: diagnose conditions, guide further tests and treatment and monitor conditions.

Useful contacts:

Two week Wait desk: **01226 432000**

If you need this information in an alternative format, please contact the **Patient Advice and Complaints Team** on **01226 432330**.

Если Вы хотели бы эту информацию на другом языке или другом формате, типа большой печати, пожалуйста звоните 01226 432330

Jeśli potrzebujesz te informacje w innym języku czy w innej postaci, na przykład dużym drukiem, proszę dzwonić na numer 01226 432330

如果您想索取這些資料的中文譯本或以其他形式編制的版本（如大字體），請 致電01226 432330

به زمانیکی تر دهست بکهوٲت یان به فؤرماتیکی تر،
01226 432330 نه گهر چه ز ده کهیت نه م زانیاریهت
وهک چاپی گهوره، تکایه تله فؤن بکه بو نه م ژمارهیه

Barnsley Hospital NHS Foundation Trust

Gawber Road, Barnsley S75 2EP

Tel: 01226 730000 Fax: 01226 202859



www.barnsleyhospital.nhs.uk



@barnshospital



www.facebook.com/barnsleyhospital