

Small Bowel Capsule Endoscopy

Stacey Ward

Capsule Endoscopy CNS

What is Capsule Endoscopy?

Definition:-

- Capsule endoscopy(CE) is a procedure that uses a tiny wireless camera to take pictures of the digestive tract

The Equipment



The Capsule



Real Time



Why do small bowel capsule endoscopy?

- Find the cause of obscure gastrointestinal bleeding. After normal gastroscopy/colonoscopy.
- Diagnose /assess inflammatory bowel disease
- Unexplained Iron Deficiency Anaemia.
- Coeliac disease.
- Screen for polyps.

Benefits to the patient

- The Capsule is easy to swallow.
- The procedure is non-invasive
- It is painless
- There is no potential harm from radiation
- Additional investigations can often be avoided.
- Gold standard for visualising the small bowel

Potential Risks

- Capsule endoscopy is a safe procedure that carries a few risks.
- Retention:-
- Routine Patient <1%
- Suspected IBD 1-4%
- Known Crohn's 10%

Risks contd.

- Other factors – caution with NSAID's and previous bowel surgery
- Prevention:-
- Patency Capsule – We provide this service at BDGH.

What is a patency capsule?

- Same shape and dimensions as the real video capsule.
- Dissolvable after 30 hours.
- Detected by radiography
- If still detected further investigation such as CT or MRI is required.

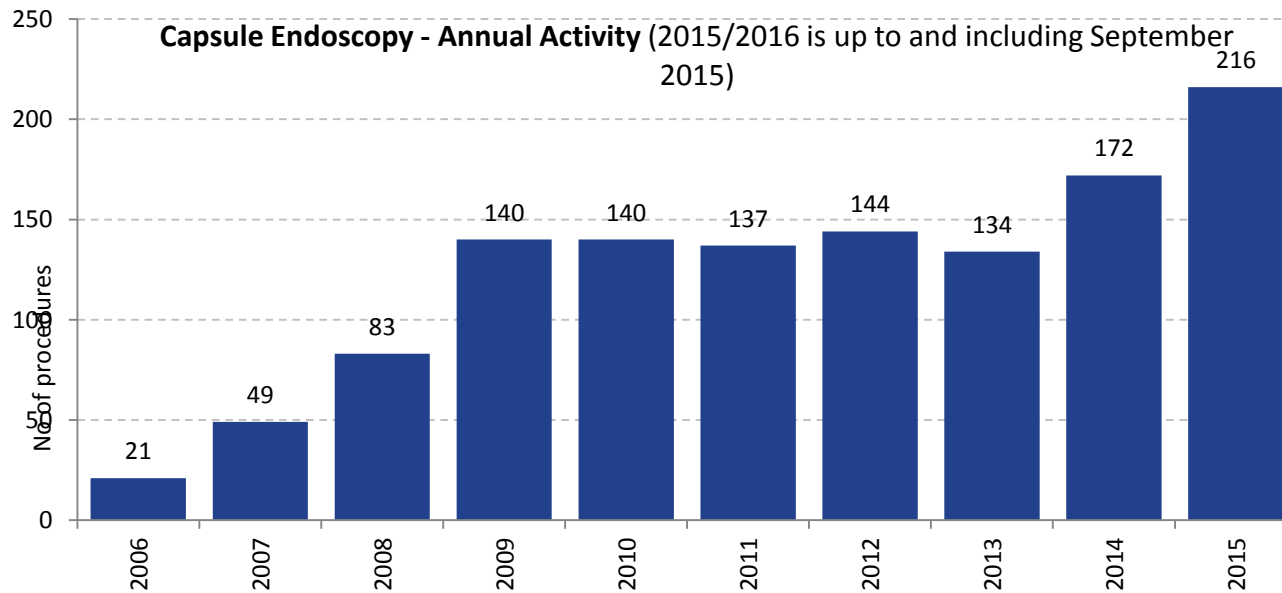
Why choose Barnsley?

- Dedicated Capsule team with over 10 years experience in capsule endoscopy.
- Short waiting times
- Short reporting times

The journey so far

- Capsule endoscopy service started 2005
- Service reviewed in 2014
- Improved patient satisfaction survey
- Quality of reports improved
- CNS appointed 2015
- Shortened turnaround time of capsule reports since CNS appointed
- Increased capacity

No. of procedures performed



How to access the service?

- Clinics (Iron Deficiency Anaemia Clinic)
- Endoscopy Coordinator
- Dr Kapur Or Stacey Ward Capsule Endoscopy Team.

The future.....

- To develop and expand the existing service.
- To introduce the colon capsule. This should be offered to patients that refuse colonoscopy, and patients that have inflammatory bowel disease for surveillance.

04:39:34

05 Sep 14

AX



PillCam[®] SB 3

06:59:50

14 Mar 14

DR

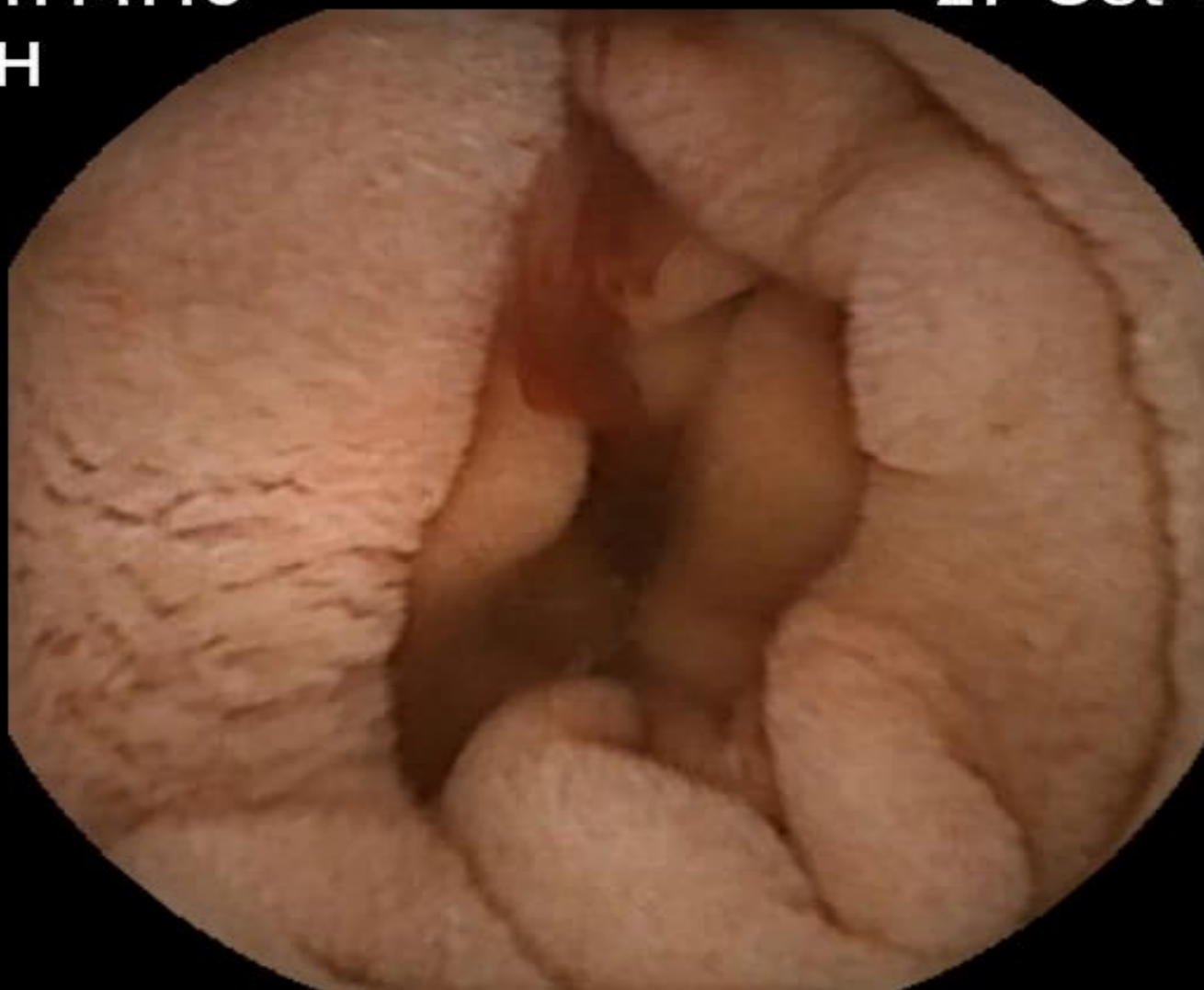


PillCam[®] SB 3

01:14:13

27 Oct 14

TH



PillCam[®] SB 3

