

Gastroscopy

A test where a thin flexible telescope with a camera on the end is inserted through the mouth into the oesophagus (gullet) and down towards the stomach and small intestine. The clinician may need to take a biopsy which is a small sample of tissue which is examined more closely under a microscope

What if I choose not to have the test you recommend?

You will have the opportunity to discuss this with the triage nurse. If following this you do not feel you want to proceed, you should discuss this with your GP

What happens after my test?

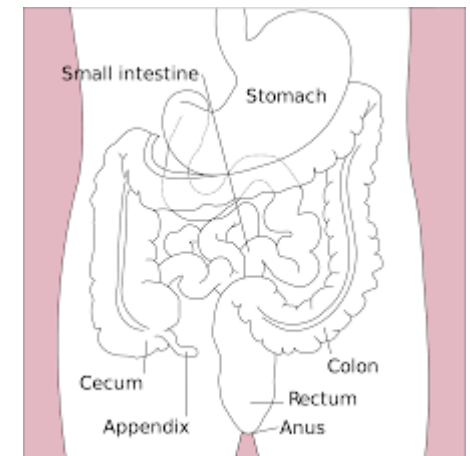
In some cases the specialist carrying out your test will be able to tell you there and then the results of your test.

For some people they will need further tests or investigations or a referral for further treatment. In all cases your GP will be contacted with the results of your tests. In some cases you may be asked to attend an outpatient appointment.

PATIENT INFORMATION



COLORECTAL SERVICE TELEPHONE TRIAGE ASSESSMENT



Telephone Triage

You have been referred by your GP for a telephone triage assessment with the Colorectal Service at Barnsley Hospital. The aim of the information in this leaflet is to help explain how the telephone triage process works.

The Colorectal Service deals with patients who experience problems with the lower part of their Gastrointestinal tract, these can include conditions such as piles, irritable bowel syndrome, diverticular disease, and sometimes cancer. All these conditions can cause different symptoms, so it is important to have your symptoms checked.

The triage nurse will contact you by telephone, so please ensure the GP has your up to date telephone number, which can be a landline or mobile number. The triage nurse will contact you within 3 days of your visit to your GP. If you do not hear from the team, please contact us on 01226 435733 or 01226 435737.

During this call which will take around 30 minutes, the nurse will discuss what tests may be arranged for you and the medication you

will need to take in preparation for these tests. You will be asked questions about your health, any medication you take, your symptoms and personal circumstances. You may be required to take bowel preparation for some of these tests, therefore, the triage nurse will also explain which type of bowel preparation you need to take before the test is carried out.

If there are any medications you may be required to stop taking before your procedure, the nurse will also advise you of this. Specific dietary restrictions or changes that may be required in preparation for your procedure will also be explained.

You will be provided with information and instructions for taking your bowel preparation which will all be posted out to your address. Your procedure appointment will be arranged during the triage call and this will also be confirmed by letter.

If you do not receive your bowel preparation through the post within 7 days You must contact the hospital on 01226 435733/435737

Potential procedures

Flexible Sigmoidoscopy

In this procedure a thin flexible telescope with a camera on the end is inserted into the back passage. This examines the lower third of the bowel. On the day of this test you may have a laxative prior to the test taking place. The clinician may need to take a biopsy which is a small sample of tissue which is examined more closely under a microscope.

Colonoscopy

In this procedure a thin flexible telescope with a camera on the end is inserted into the back passage. This will examine the whole of the large bowel. The bowel preparation for this will be taken the day before this test. You also have an option of a sedative for this test which will help you feel more relaxed, this will be discussed by the triage nurse. The clinician may need to take a biopsy which is a small sample of tissue which is examined more closely under a microscope.